



FOR YOUTH DEVELOPMENT®
FOR HEALTHY LIVING
FOR SOCIAL RESPONSIBILITY

2019
YEAR IN REVIEW
WIDJIWAGAN
YMCA WILDERNESS ADVENTURES



Board Members 2019

Nate Blumenshine
Allison Burke
Tom Burket
Andrew Bussey
Lucy Cosgrove
Kris Donnelly
Beth Dutcher
Brian Edstrom
Carolyn Ellstra
Marjorie Fedyszyn
Earl Fleck
Jacqui Forbes
Marilyn Franzen
Cindy Gardner
Mark Garrison
Anne Hartnett
Colleen Healy
Meike Hengelfelt
Tom Hiendlmayr
Megan Holleran
Chris Johnson
Katie Kelsey
Doug Kleemeier
Peter Loewenson
Sara Mairs
Bob McKlveen
Dave Mink
Peter Murray
Leigh Onkka
Ned Patterson
Kit Piltingsrud
Jeff Rick
Tom Rock
Shor Salkas
John Saxhaug
Mark Schroeder
Ben Sheets
Annie Walsh
Kris Weum
Yolanda Womack

About the cover: Close to 240 Camp Widjiwagan alumni, staff and families gathered to celebrate at the 90th Reunion July 12-14, 2019. Also pictured are the two restored historic BN Morris canoes originally owned by Joe Seliga.

Camp Widjiwagan Strategic Roadmap 2018–2021

BY JOHN SAXHAUG, CAMP WIDJIWAGAN BOARD CHAIR AND NED PATTERSON, PAST CHAIR

In October 2017, the annual Camp Widjiwagan Community Board convened at camp to prepare the groundwork for a strategic roadmap that would guide our work for 2018–2021. With Matt Poppleton’s first summer completed as executive director and Ned Patterson providing leadership as board chair, it was an opportune time to set the tone for what would become a nine-month process. Board member Anne Hoyt Taff expertly guided the session and brought out the unique perspectives and experiences of each individual board member present to build a deep and shared understanding of the Camp Widjiwagan community as it is today and will be in the future.

Using a “sunrise/sunset” exercise, the board created a list of implications and opportunities. The session concluded by establishing basic parameters for the development of specific board actions that included:

- An openness to change
- A recognition of changing demographics, culture and values
- The need to embrace more diverse communities
- The call to expand enrollment to a broader range of financial and demographic participants



John Saxhaug and Ned Patterson

Members of the Camp Widjiwagan community met that November to participate in a strategic roadmap workshop, again led by Anne Hoyt Taff. This group included campers, staff, past board members and past directors, representing a broad range of ages and experiences. They took the work accomplished by board members at the October retreat and brainstormed actions the board can take to support and serve the mission of Widjiwagan for the next four years. The result was the following six actions, displayed in a diagram of the strategic road map, shown at right.

In May of 2018, board committee chairs met to strategize how best to move forward with the actions of the strategic road map plan, taking advantage of actions that could be achieved readily in the short term with consideration of actions that will take a longer-term commitment to accomplish.

SHORT TERM ACTIONS

In the shorter term, actions that provided immediate impacts included:

- The successful 90th Anniversary Camp Widjiwagan Reunion
- The Groveland School Bridge Program, providing a pathway for students attending the Outdoor Learning Program to participate in Camp Widjiwagan’s summer program
- The integration of the Y’s Bold and Gold Program, an education program designed to develop cultural competency and leadership skills in young men and women through challenging outdoor activities with Camp Widjiwagan, including an internship program to develop possible future staff.
- The consolidation of the Financial Development and Annual Fund committees

“As the board approaches the halfway point of our strategic roadmap work, we will continue to complete and expand our efforts for a successful conclusion.”

2019 Year In Review Director's Column

BY MATT POPPLETON, EXECUTIVE DIRECTOR

2019 marked Camp Widjiwagan's 90th anniversary, and it was an honor to be part of such a momentous year. It was also a year of challenge and loss that serves as a strong reminder of how each day and interaction with others should be valued. Like any great adventure, it is the journey that counts more than the destination.

Our Outdoor Learning Program started the year with a particularly cold winter. Daytime temperatures of -20° F degrees throughout January required some schools to reschedule and our instructors to find the balance of keeping students warm and engaged while still having fun and learning. I am happy to report that there were no incidents of frostbite, and many students went home proud of their ability to have fun and learn while in the outdoors of the north woods.

While our Outdoor Learning Program was underway, there was much activity in planning for a busy summer. In addition to a full summer of campers and advanced trips, our 90th Reunion Planning Committee gathered even before the year started to plan and organize a reunion to remember! A big thanks to co-chairs Sara Mairs, Mark Holloway and the rest of the 90th Reunion Planning Committee. So much time and consideration went into the development of the event with the overarching goals of celebrating Camp Widjiwagan and welcoming everyone who attended. You can read more in the full article on the 90th Reunion, but highlights for me included meeting and celebrating Lois Eyinck, the first Woman Voyageur Leader from 1956; rededicating two B.N. Morris canoes that were expertly restored for future Widji campers; celebrating the legacy of Joe and Nora Seliga in the book **Canoeman Joe** that was released at the event; and seeing old friends and making new ones. It's hard to believe that we fit so much into a weekend, but we did and celebrated with more than 240 guests.

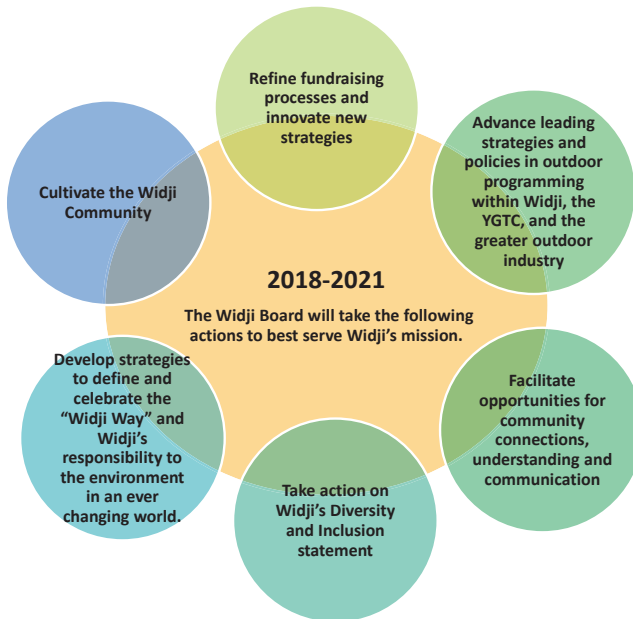
A strong theme of the 90th anniversary was recognizing the past, present and future of Widjiwagan. As summer ended, our staff and board continued our work on Widjiwagan's Strategic Roadmap, which outlines our priorities through 2021. Great work is happening to address tough questions around inclusion, history and how Widji can best serve campers today and into the future.

We also experienced transition and loss throughout the greater Widji community this year. An interesting part of our Sunday service at Chapel Point during the 90th reunion reflected on loss within a community. The tone was solemn, but the service also provided space for real emotions that can sometimes get pushed aside in the spirit of being at Widji and always focusing on the positive. In December 2019, we lost Armin "Whitey" Luehrs who had been the Widjiwagan Camp Director starting in 1951 and who opened Camp du Nord. Whitey's impact and influence on Widjiwagan can still be felt today with our focus on small group experiences, the wilderness, inclusive programming and a deep mission of respect. We were fortunate to have Whitey share these thoughts at our Spring Banquet in April 2019.

So like the end of long portage or steep ascent, 2019 is a year to be proud of. Looking back, the view is beautiful and filled with stories. And like the anticipation of the next trip, our path continues with new adventures around the corner. ▼



Matt Poppleton



To develop, in young people, respect for self, community and the environment, through wilderness adventure and environmental education.

LONGER TERM ACTIONS

In the longer term,

- The Environmental Responsibility and Indigenous Culture task forces were established to address issues that will have a continuing impact on the camp now and into the future
- Discussions continue on the definition and application of the "Widji Way"
- A foundation is being laid for a cohesive diversity and inclusion strategy; a key component of this strategy is an exploration of gender identity at camp

As the board approaches the halfway point of our strategic roadmap work, we will continue to complete and expand our efforts for a successful conclusion. If you have any questions, comments or concerns about the strategic road map and plan, please feel free to contact Matt Poppleton, Ned Patterson, John Saxhaug or any member of the community board. ▼

90th Reunion Committee

Mark Holloway, Co-Chair
 Sara Mairs, Co-Chair
 Nancy Berry
 Nate Blumenshine
 Phil Bratnober
 John Bussey
 Bruce Casselton
 Tim Commers
 Leigh Currie
 Marilyn Franzen
 Cindy Gardner
 Jane Gilje Clements
 Katie Godfrey
 Tom Hiendlmayr
 Ned Patterson
 Matt Poppleton
 Linda Ramacier
 Ginner Ruddy
 John Saxhaug
 Julia Sugarman

Additional thanks to the many staff and volunteers who contributed to the success of the weekend.

Widji Celebrates 90 Years

BY MARK HOLLOWAY & SARA MAIRS



Widjiwagan is built on its rich history, present leadership and operations, and a mindful eye toward the future. In 2019, Widji turned 90, and throughout the year past, present and future came together to ring in nine decades of success, culminating in a summer reunion on the shores of Burntside Lake where Widjiwagan began and continues to thrive.

After almost a year of planning and amidst the buzz of summer sessions, we squeezed this wonderful event into a July weekend. The doors to camp opened to welcome folks from all generations, and Widji alum came from all over the country. Starting at the Sigurd Olson Center with hugs, pictures and wooden name tag coloring, the excitement grew as folks settled back into a place so special. The weather cooperated beautifully all weekend, and our days were filled with sunshine, blue skies and the right amount of wind. We kicked up our heels on Friday night with a barn dance in Kirby Dining Lodge, and we added and hiked throughout the area on Saturday morning after (or before) visiting a pop-up museum in the Trail Building. Saturday afternoon we dedicated two of Joe Seliga's historic B.N. Morris canoes back to Widjiwagan with several Seliga family members present, and celebrated the release of **Canoeman Joe**, a children's book about Joe Seliga. On Sunday, we had a lovely reflection service at Chapel Point and enough time to linger with old friends and share stories. Just when we needed it, a cool gust from Burntside would blow through camp. Oh, it was nice!



As Widji alums of a similar era, we felt fortunate and humbled to chair the 90th planning committee. It was good work, like a Widji trip—portaging or climbing a pass, ultimately reaching the blue water or mountain vista. And our trail group, wow! A solid group of gracious, gifted and dedicated

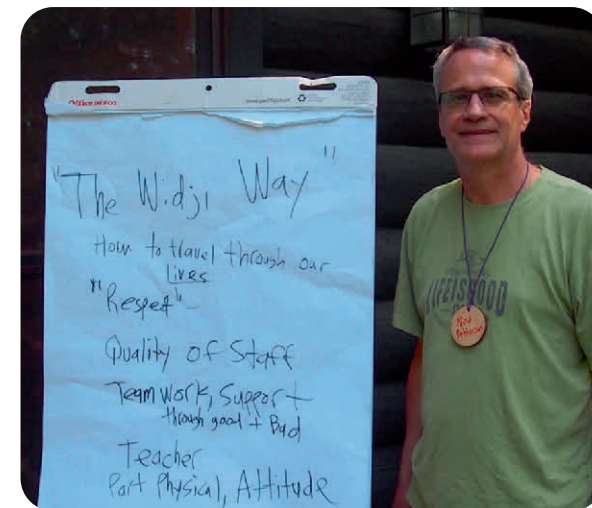
volunteers helped us with the event planning. Strong in spirit and mind, they were the driving force throughout the entire planning process.

Camp Widjiwagan's leadership was instrumental in the success of the 90th reunion. The opportunity to work with our friend and spirited Widji Executive Director Matt Poppleton was amazing. He kept the committee on track, grounded and open-minded while guiding a collaborative vision. Karen, Joe, Amy and Kathleen—along with the trail, kitchen and maintenance crews—kept the schedule moving along, always able to find ways to say "yes" and "I can help with that," which made the weekend that much more memorable and meaningful. It was incredible to see the energy and passion of all the people involved working together for this event.

The 90th was a blast ... celebrating Widjiwagan is fun and very important. The 95th and 100th year anniversaries are right around the corner, and we should all look forward to ringing in these amazing benchmarks with as much if not more excitement, enthusiasm and pride as we did this year. Happy birthday, Widjiwagan! ▼

YEAR-ROUND STAFF 2019

Matt Poppleton, Executive Director
 Karen Pick, Outdoor Learning Program Director
 Kathleen Floberg, Wilderness Program Director
 Amy Hadow, Summer Program Director
 Joe Smith, Property Manager
 Erik Johnson, Kitchen Manager
 Mike D'Arcangelo, Canoe Master
 Katie Godfrey, Administrative Coordinator





"It was incredible to see the energy and passion of all the people involved working together for this event."



Building the Groveland Bridge Program: Assessing, Planning, Partnering

BY AMY HADOW, SUMMER PROGRAM DIRECTOR

People are often surprised when I tell them that Camp Widjiwagan serves between 1,500 and 2,000 students during the fall, winter and spring months. Our Summer Wilderness Adventure Program receives much of the focus and recognition despite serving about half



as many young people. Students participating in our Outdoor Learning Program (OLP) often have a life-changing experiences becoming comfortable with the outdoors, themselves and their classmates. Very few young people have the opportunity to see the night sky free of light pollution, and many have never explored outside at night. From a practical perspective, safety concerns often necessitate caution and curtail after dark activities in city neighborhoods and parks. We ask many OLP students to confront an understandable fear of darkness when we send them out for a night hike eight hours after arriving at Widji. Most students return from the night hike feeling thrilled by the joy of adventure, proud of themselves for overcoming their nerves and supported by new friendships formed by the unifying experience of navigating uneven ground in the dark. Some students truly thrive in this environment. Their faces glow as they talk about the woodcock they watched dancing in the spring or the zooming otter they saw slide down Molly's Cliffs. For students like these, we hope that the OLP will serve as an introduction to a long-term relationship with the Widji community and outdoor experiences.

We also hope that students who fall in love with exploring the north woods will continue their growth as competent outdoors people, stewards of natural places and confident young adults by registering for a summer canoeing or backpacking trip, and many of these students do. As a result, Widji becomes a part of the community and the culture of schools that repeatedly visit the OLP as much as their students become part of the Widji community and culture. Older siblings of some students go to Widji, and that helps build anticipation too. Some students even have parents who have participated in our programming.

Students like these have the feeling of following in someone's footsteps—participating in a community-recognized rite of passage—when they return for an Intro trip in the summer. However, developing a mutually shared community and culture that grows more intertwined over time has proved more challenging in schools that serve populations with a majority of students of color and low income students. More generally, we have noticed that the students who make the transition to our summer program disproportionately come from middle and upper income economic backgrounds and identify as white even though many Widji OLP students don't fall into this demographic. The Widji team has noticed this gap but consistently struggled to bridge it despite feeling committed to supporting long-term relationships with the outdoors for all interested students.

Groveland Elementary School from Saint Paul has been visiting Widji in the fall for more than 25 years. Widji is a part of

the Groveland community and culture, and students anticipate visiting for months. This anticipation overflows in exuberant chatter as the Groveland fifth graders unload from their buses on the day they arrive. These students can't wait to share the stories they have heard from 6th graders and older siblings. Yet despite the excitement, comfort and connection that Groveland students feel with Widji, we see a divide between those who continue to participate in Widji programming after their OLP experience and those who only visit Widji once.

Groveland is an incredibly diverse elementary school by all metrics. About half their student population claims free or reduced school lunch, the measure of economic diversity traditionally tracked by the school system. Groveland students hail from all over the world. The students who continue to access our programming, however, tend to be the students whose families speak English, allowing them to more easily navigate our website, materials and registration system. These families typically have the economic means to purchase

appropriate gear or know where to borrow it. And they can still pass as part of the Widji community even when they wear borrowed outdoor gear because the color of their skin allows them to blend in with our camper population. With so much anticipation, excitement and familiarity with Widji, we knew that Groveland presented an opportunity to focus on navigating color, economic and other barriers.

At Groveland, we also have an incredible advocate in 5th grade teacher, Mr. Jeff Sambs. Mr. Sambs came to the Widji administrative team with a plan to address the multitude of barriers that many young outdoors people face as they try to access Widji. Together, five of us created the Groveland Bridge Program with the goal of helping connect young people from Groveland with our summer programming. We worked together

to streamline our scholarship process, provide translation for families completing our registration process, identify medical providers to offer physicals to these campers, and provide summer counselors additional training related to diversity and inclusion. Most important, Mr. Sambs is a familiar presence who also knows about Widji and can answer the questions

these campers and their families ask. Campers participating in the Groveland Bridge Program receive two years of support at this level before we help them transition to registering by the process our general camper population uses. Groveland Bridge Campers start at Pathfinders for their first year and then return as Intro to Canoeing campers or Boys and Girls Outdoor Leadership Development campers (BOLD/GOLD) for their second



year. This program started small with only three campers in 2019 but we are growing in 2020 and hope to continue this trend. Based on the reviews of our first Groveland Bridge Fellows, we are excited to watch where this program will go. ▼

Outdoor Learning Program

WHAT IS WIDJI?

WRITTEN BY A STUDENT FROM
NORTHROP SCHOOL, MINNEAPOLIS — FALL 2019

"Camp Widji is a great camp. I am so glad we get to go. It is fun getting outside in nature and much more. You do lots of team-building games. You also learn about voyageurs and food waste. We get to learn to be without our electronics, which sometimes can be tough, but at Widji it was actually easy.

"At Widji, almost everything you do is outside. You play games outside, you hike, make fires, learn to canoe and more. Everyone has fun outside! It is a great time to learn about team building!

"Team building may not sound like a big part of Widji, but it is. This is what I learned most at Widji. You play games about it or just help a friend. Either way, at Widji it is fun.

"Learning is not always fun, but at Widji it is always fun. Learning at Widji is like playing your favorite game. They make it so fun!" ▼

OUTDOOR LEARNING PROGRAM GROUPS-2019

Anne Murphy & Friends	LSS - Oh No! 18
Blake School	Many Rivers Montessori
Board Retreat	Marshall School
Board Work Weekend/Widji Leaders	Northrop Urban Environmental School
By the Light of the Moon - SISU Knitting Weekend	Oak Hill Montessori
Carondelet Catholic	Olson Middle School
Ely 7th Graders	River Grove Elementary
Expo Elementary	Seward Montessori
Fall Sampler	Shakopee Area Catholic School
Fall Women's Retreat	South High School
German Exchange	Southern Adventist University
Great River School	St. Paul Academy
Groveland Park Elementary	St. Therese School
Jefferson Community School	Sunny Hollow Montessori
King of Kings	University of Minnesota - Institute of Child Development
Lake Country Montessori	Valley View Middle School
Life House, INC.	Winter Women's Retreat





Buildings & Property Update

JOE SMITH, WIDJI CARETAKER

Widjiwagan continues to prepare for its future while recognizing and preserving the values and characteristics that help us provide experiences that mean so much to so many people. The most notable projects of the last year include:

- Building a new septic system to let us replace Hillside and Hilltop in the future with housing more suited for long-term, year-round use by our program directors.
- Adding a backup generator to provide enough electricity for Widjiwagan to function in the event of a long-term power outage.

- Converting the lights in the Kirby kitchen to more energy efficient LED fixtures.

I would like to emphasize how much thought goes into the selection and implementation of these projects by the Widjiwagan staff, the Buildings & Property Committee and the Widjiwagan Board. With all of these projects there are many questions to answer. "How will it benefit program?" "How does it affect our aesthetics?" "What are the environmental impacts?" "Does the design reflect our commitment to social values?" And the big one, as always, is this: "How are we going to pay for it?" Rest assured, all of these questions are raised and analyzed in committee meetings,

site tours and board meetings until we feel appropriate answers are found.

Standards and needs have changed over time. What was considered an adequate septic system in the past would not get a permit today. The need to allow for personal privacy is recognized today. Our need to accommodate greater numbers of trail groups at a time in the summer has increased. Our environmental education program's success creates demand for dependable year-round infrastructure. These are rewarding challenges in that Widjiwagan becomes stronger as we meet them. We are currently in discussions about how to replace the sauna with a user-friendly building that will allow more trail groups at a time, satisfy privacy needs, be safe and efficient, all with minimal impact. ▼

YMCA CAMP WIDJIWAGAN HERITAGE SOCIETY MEMBERS

Thank you, Heritage Society Members, for your commitment to future generations.

- | | | | | | |
|----------------------------------|---------------------------|------------------------------|---|----------------------------------|--------------------------------|
| Anonymous (2) | Grace Ann & John Curry | Linda Gustafson & Roxy Port | Judith Frost Lewis & Stephen Lewis | Joan Ostergren & James Alexander | Kathy Schwarz |
| Julia & Jim Adams | Blake & Sandy Davis | Rose M. Gustafson | Georgia R. Lindeke | Doug & Phyl Ostergren | John Shepard & Suzanne Brust |
| James C. Andre | Kelly Davis & Bill Stump | Linda Brown Harris | Darwyn & Marie Linder | Joanne Oyen | Linda & Spencer Silver |
| Matthew Bailey & Kristin Gendron | Steven Diede & Anne Zerby | Tom Hiendlmayr & Jan Ormasa | Kay Lyford | Thomas Paper & Eleanor Bigelow | Lee & Margaret Skold |
| Walt & Ginger Bailey | Mairi C. Doerr | Geoffrey & Linda Hirt | Kent & Barbara Lyford | John Patterson & Julie Sonier | Michael Smuk |
| Armand & Beverly Ball | Charles Driscoll | Christine & Douglas Hlavacek | Kristine Maritz | Thomas & Sally Patterson | Connie & Byron Starns |
| Sandra Bjorndahl | Carolyn & Sara Ellstra | Lucy Hollinshead | Gayle Rose Martinez | Steve Patzman | Mary Stoick |
| Paul H. Boening | Sharon K. Erickson | Mary Horak Binger | David & Sherla Mayer | Nancy G. Priedeman | Edward & Jean Therrien |
| Gretchen & Brian Boyer | Ann & Dwight Ericsson | Ruth & Alvin Huss | Paul T. McArthur | Mary Jo Quehl | Rolf Thompson & Carol Jacobson |
| Greg E. Bradbury | Betty Felix | John & Polly Jackson | Elspeith Savage McClelland & William McClelland | Thomas Racciatti | Rev. Kathryn A. Tiede |
| John & Jill Bradford | Elizabeth P. Fesler | Nathaniel Jacobson | Greg McNeely | Linda & Dominic Ramacier | James & Marianne Ude |
| Mary Broecker | Nancy Fesler | David & Judy Jerde | Lynne Meyer & Mary Walsler | Margaret Rarig | Jane E. Verby |
| Carmen Brunner | Elizabeth Flinn | Charlotte & Ward Johnson | Ranlet & Beth Miner | Katie Reed | Anne & Daniel Walsh |
| John Burke & Kathleen Joyce | James D. Flinsch Sr. | Eric Johnson | Jonathan & Martha Morgan | Gary & Gale Rick | Jennette Wasmund |
| Polly M. Burnham | James & Joan Gardner | Frank & Meredith Johnson | Anne & David Murphy | Tom & Donna Riley | Linda Western |
| Michael & Marcia Bussey | Jamie & Cindy Gardner | Arthur Kaemmer | Janet E. Nast | Gwyneth Rochlin | Jim & Ann Wheeler |
| Peter Butler | Edward & Dana Garvey | John & Sally Katter | Uri Neren | Winthrop & Barbara Rockwell | David & Suzanne White |
| Arta P. Cheney | Judith Gavin | Cheryl & Daniel Kelley | Robert & Sarah Newman | Virginia Ruddy | John & Janice Wilke |
| Jane Gilje Clements | Jean Geist | Esther Kellogg | Nedra Nicholls | Donna Runyon | Barbara J. Williams |
| Douglas & Kathleen Clock | Laura J. Giaquinto | Dessie P. Koch | Richard & Nancy Nicholson | Alan & Sally Ruvelson | Mary Williams |
| Paul & Rachel Craighead | Jean K. Godfrey | Thomas & Cheryl Kranz | Mark & Janell Niemann-Ross | Constance & Kenneth Sansome | Dan & Ruth Ann Willius |
| Karen & Alan Crossley | Robert & Susan Greenberg | Bethanne Kronick | | John Saxhaug & Lynn Rabinovitch | Nathan Zietlow & Sarah Risser |
| | Ann I. Guhman | Mary Levins | | | |

Restored: Two Historic, History-Making B.N. Morris Canoes



The entire Widjiwagan family celebrates the historic, one-of-a-kind wood and canvas canoe fleet that makes the camp experience so unique. Of the 201 canoes in the fleet, 114 are either wood canvas or wood fiberglass canoes, 57 of which were made by Joe Seliga. Many others are Old Town canoes. But have you heard of B.N. Morris Canoes? They were made in Maine in the early 1900s,

and Joe Seliga owned two of them. In 2019, Widjiwagan launched both canoes, fully restored and just in time for the 90th Reunion Weekend.

Bruce Casselton documented the restoration, and in **Wooden Canoe** magazine—the journal of the Wooden Canoe Heritage Association—he published a full, two-part account of the process, the history and the relationship with Joe Seliga.

The canoes came to Widjiwagan as donations. In 1994, Joe and Nora Seliga donated a 15-foot Morris Special Indian (Model 62) to Widjiwagan, and his nephew and wife donated an 18-foot Morris in 2005. Joe’s father Stephen purchased the canoes in 1905 and 1906. In an interview in 1984 in **Wooden Canoe** (No. 18), Joe Seliga said, “I don’t think anyone built a finer canoe than B.N. Morris. It’s a canoe that when it gets in the water, it is like a swan—proud.”

As Casselton notes, “The Seliga Morris canoes are significant because [Joe Seliga] used the 15-foot canoe as a mold to build twenty-seven 16-foot Seliga canoes; and the 18-foot became the model for the forms he used to build a small number of 18-foot Seligas and a larger number of 17-foot canoes, a model he preferred for wilderness tripping.”

From a restoration standpoint, a canoe made more than a century ago that also served as a form for building other canoes poses considerable challenges. Casselton notes that the 15-foot Morris had absorbed more than 59,000 hammer blows during the years Joe and his family used it to build their own wood canvas canoes.

Widjiwagan entrusted the restoration work to Alex Comb of Stewart River Boats and Canoes in Knife River, Minnesota, and Tim Eaton at Urban Boatbuilders, a Saint Paul-based youth program helping teens develop life and work skills through boat building.

As the photos indicate, the restored, water-ready canoes are a beautiful addition to Widjiwagan’s fleet. Each summer, select Widjiwagan groups will use these canoes on trail. In doing so, Widjiwagan will continue the Morris and Seliga legacy, keeping alive the spirit, creativity, optimism, uniqueness and strength of these canoe builders. ▼

Part 1 of Bruce Casselton’s in-depth story of the Morris canoe restoration project appeared in **Wooden Canoe** in December 2019 and Part 2 following in the Spring 2020 edition. With the permission of the Wooden Canoe Heritage Association, both articles are available on the Widjiwagan website at: www.ymcamn.org/camps/camp_widjiwagan/forms_publications



ENROLLMENT HISTORY, 2013 – 2019

Campers	2019	2018	2017	2016	2015	2014	2013
Summer Campers	674	702	754	730	697	706	603
Organizational Campers	50	75	59	18	50	41	51
Outdoor Learning Program Campers	1511	1542	1678	1478	1564	1617	1553
Year Round Totals	2235	2391	2491	2226	2311	2364	2207

Linda Ramacier builds Widji relationships— even in retirement

BY KATHY CLOCK

From eager young employee to energetic retired volunteer, Linda Ramacier's path has been to work for the good of YMCA Camp Widjiwagan.

GENUINE CONNECTIONS

"I believe people know this, but Linda cares deeply about Widji," notes former Widji Executive Director Liz Flinn. "What I really appreciated about her was this was at the core of all she did."

"Linda is completely genuine," agrees friend, former board member and coworker, Connie Starns. Developing relationships is part of a fundraiser's job, but it's never just a job with Linda. She does it because she loves it."

A WIDJI SOCIAL NETWORK

You could say that Linda has a gift for social networking. Colleague and friend, Jeri Glick-Anderson of the YMCA of the Greater Twin Cities, loves hearing Linda say, "Have I got a story for you," and that story will guide you through a whole web of Widji connections.

A MULTIGENERATIONAL VIEW

Former coworker Tom Burket has his own story about Linda's multigenerational view of the Widji community: "I stopped working at Widji in 1991, and my wife and I booked our daughter's first Widji trip in 2013, and there was Linda at the check-in table."

"In 22 years," Tom continues, "I had only seen her once or twice. I'm not kidding, but the second or third thing she me asked was, 'How are your parents?' She had remembered they lived on a farm and were teachers. And she was genuinely curious about their health and how they were enjoying retirement."

"No one, but no one," says Tom, "could see Widji's big picture like Linda, and know so many of the fine details, too."

PROVIDING STABILITY

As Camp Widjiwagan has grown throughout the years, there have been transitions. Thanks in no small part to Linda's depth of knowledge and the stability of her presence, Widji continued to thrive.

Sally Patterson, board chair during a particularly challenging transition, recalls: "I remember how valuable Linda was in 1999–2000, when we lost our

executive director. It was Linda who held us all together, communicated constantly, and related to each of us with her dedication and true love of Widji. We finally found Tom Kranz by December. No one will ever be able to replace her, period."



INVESTING IN SOCIAL RELATIONSHIPS

Thanks in large part to Linda's behind-the-scenes wizardry, Widji fundraising and volunteer events have become popular social gatherings. As former Executive Director Rolf Thompson recalls, "Call Nights became fun, uplifting gatherings of old Widji friends because of Linda's attention to the food, materials, supporting data and general ambiance." Dedicated garage sale volunteers enthusiastically agree.

Matt Poppleton found Linda's help invaluable through his first year and a half. "Now," adds the current executive director, "I get to work with Linda as a volunteer, and she is equally helpful and insightful. Her commitment and care for Widjiwagan, though, is so strong that not a week goes by that we are not connecting."

BEHIND THE SCENES

Like a stage manager, Linda is a pro when it comes to handling the behind-the-scenes details that make a production a success. "She is persistent and tenacious in completing whatever needs to be done, but at the same time she always acts with grace and patience and kindness," says friend and colleague Arlene West. "I picture her like the duck that glides serenely across the water, making it easy to forget that she is vigorously working below the surface."

Linda credits husband Dominic Ramacier for his generous support of her work, and in providing his own efforts as a volunteer. On behalf of the Widjiwagan Community, thank you Dominic for sharing Linda and for your many contributions to camp over so many years!

THE PATH AHEAD

What else should people know about Linda Ramacier?

"Linda has an adventurous spirit and travels extensively with her husband Dominic," notes Matt Poppleton. "Together they have visited most of the National Parks. And she is a constant caregiver, always on call, and supporting her family almost daily."

"Not to forget," adds Liz Flinn, "Linda has a great laugh!" ▼



Linda and Dominic in Death Valley National Park

In Memoriam

Remembering Whitey

BY JOE NASVIK



For this 2019 Year in Review, we asked longtime member of the Widjiwagan community Joe Nasvik to reflect on the deep and lasting influence Armin “Whitey” Luehrs had on Widjiwagan and on his own life. Joe has much to share because in so many ways the stories he relates about Whitey Luehrs are also foundational stories about Camp Widjiwagan that continue shaping what it is today. Below are excerpts from the longer article Joe wrote at [LINK](#).

“Whitey was one of those larger-than-life people that one encounters maybe once in a lifetime. When I was on the staff at Widji from 1959 to 1962, we all stood in awe of him. He commanded respect without ever asking for it and seemed to know everything that was going on in camp, including the pranks and things we staff members tried to keep from him. And he was always a supportive friend and good listener. He preferred not to be in the spotlight. In his mind it was never about ‘me’ and always about ‘we.’... His sense of humor often came out at those times, and every now and then you could get a glimpse of his mischievous side too.”

“Whitey looked for two qualities when he hired program staff: good camping and trail skills and good people-working skills. He said that if he had to pick one over the other, good people-working skills were the most important. Widji would teach the camping skills. As time went on, Widji was able to hire staff from within, campers who came back year after year who knew the ‘Widji Way.’ Widji knew they could be good counselors.”

“He was skilled at managing and supervising staff, and his catch phrase was ‘expect and inspect.’ He had great faith in his staff and delegated enormous responsibility to them. But he felt it was also his responsibility to know that his trust was well placed. ... He also made himself available to staff whenever they needed to discuss things with him.” ▼



Thank you, Joe, for so eloquently remembering

Whitey Luehrs and celebrating the many ways he impacted your life and Widjiwagan as a whole. His tenure as Widjiwagan’s director began in the 1950s, but his legacy lives on today in Widjiwagan’s emphasis on small group wilderness experiences and the initiatives he took to create programming for girls and young women.



Whitey Luehrs also founded Camp du Nord, for which many generations of families are deeply grateful. May his vision, foresight and energy continue to inspire us all.

And how many couples trace some of their earliest days together to shared adventures at Widjiwagan? A nurse named Ginny worked at Widjiwagan in 1956 when Whitey was director. Little did they know they would be blessed with 60 years of marriage, three children and four grandchildren. ▼

[Read a more comprehensive reflection from Joe Nasvik on Whitey Luehrs on the Widjiwagan website:](http://www.ymcamn.org/camps/camp_widjiwagan/forms_publications)
www.ymcamn.org/camps/camp_widjiwagan/forms_publications

In Memoriam

At age 91, **Peter Anson** died peacefully on January 17, 2019, surrounded by his family, after a long struggle with dementia. Peter is survived by his wife of 63 years, Sally, and his children and grandchildren: Catherine (Peter Vaughan), and children Elliot, Angus and Carl; Michael (Nancy), and children Pau and Nora; David (Nancy), and children Colin and Trevor; Leslie von Wangenheim (Detlev), and children Theresa and Constantin, and one great-granddaughter, Molly Anson.



Peter Anson

Peter was a corporate lawyer at Faegre & Benson, and later became a partner. He loved the intellectual, logical and problem-solving aspects of the law. In Peter's retirement years, his love of history and exploration led Sally and him on many hiking and expedition trips all over the world. He loved fixing and building things. He would design jewelry, repair cars, build the best fires and pitch any tent, and he taught his children to do the same. He took them on countless camping, canoeing, fishing and hunting trips. Peter had a fabulous sense of humor, a strong sense of fairness and a deep sense of integrity.

Peter served on many boards over the years and joined the Widjiwagan Board in the 1980s. Most of his children and grandchildren have been campers and trail counselors. Peter and Sally have supported many Widjiwagan annual and capital campaign efforts over six decades. Through the generosity of the Anson families, many campers who could not afford the camping experience have benefitted and will for generations to come.



Kathy Ball

Age 59; **Kathryn (Kathy) Lynn Ball** succumbed to cancer at her home in Fort Myers, Florida, on June 3, 2019. She was the beloved daughter of former Widjiwagan Camp Director (1962-1974) Armand and his wife Beverly Ball. Kathy was preceded in death by her brother, Robin. She is survived by her sister, Helen Pounds; nieces, Nicole Sterrett, Stephanie

Stephen, Lyndsey Ball and Rachel Pound; nephews, Rhyan Ball and Jonathan Pound; as well as long-time friends, John Burnett, Todd Dittmer and Joyce Knudson. She also leaves behind many friends and loved ones in the Meadow Lake Circle neighborhood, Minnesota, and from her years at Camp Widjiwagan in Ely.

When Kathy moved to Saint Paul and began spending her summer at Widjiwagan she was just a toddler, and the staff fell in love with this little girl even though she would pester them all the time. She was the only young child in camp for a number of years and made her first canoe trip with her family at age 5. Kathy spent 12 summers with her family at Widji, becoming a camper and developing many lifelong friendships. She loved the northwoods and Widji.

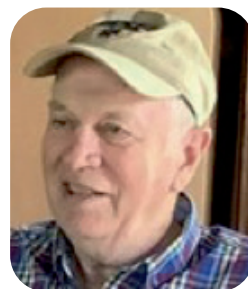
Kathy was born in Nashville, Tennessee. Her family moved to St. Paul and then to Bloomington, Indiana, where she graduated from high school. After a stint in college, she moved back to Minneapolis where she worked as a painter for a number of years and volunteered with the American Red Cross. She moved to Fort Myers in 2002 and continued her career until her recent illness.

Kathy's legacy will live on through the Camp Widjiwagan General Endowment Fund, providing the Widjiwagan experience to children and alumni in years ahead.

Age 82; **Bill Cunningham** passed away suddenly on July 24, 2019, after suffering a major heart attack. He is survived by wife Mary Ellen, children Peg Desrochers (Mark), Mary Ann Cunningham (Tom Finkle), and John Cunningham; grandchildren: Madeleine, Leo, Freya, Linnea, Sophy, Ella and Alita.

Bill was a professor at the University of Minnesota in cell biology and genetics, and later shifted to conservation biology and environmental science in response to increasingly urgent environmental concerns and the interests of his students.

Bill loved being in the wilderness, and he camped and canoed



Bill Cunningham

often with his family in the Boundary Waters. He helped persuade Congress to create the Boundary Waters Canoe Area Wilderness (BWCAW) act in 1978. He also loved books, conversation, music, novel foods, travel and sour cherry pie.

The Cunningham family has been du Nord campers for many decades. Their children, son-in-law and some of their grandchildren have been Widjiwagan campers and trail counselors. Bill and Mary continued their involvement with the Widjiwagan and du Nord Garage Sale for 50 years. Proceeds from the sale have provided many opportunities for teens and families who could not afford the programs to participate at Widjiwagan and du Nord. Bill's legacy will live on at du Nord and Widjiwagan through his many contributions, which will benefit campers for generations to come.



Dorothy "Dottie" Ferro

Age 95; **Dorothy Ferro** passed away peacefully on December 30, 2019. Preceded in death by her loving husband Fred and son Scott, who was a Widji camper. She is survived by her sons David (Jane), Gary (Jan), daughter Debra, one granddaughter, three great granddaughters, two step grandchildren and three step great granddaughters.

She loved baseball and was an enthusiastic Minnesota Twins fan. She enjoyed music, reading, playing tennis, hiking and running — so much so that at age 59, she ran the Twin Cities Marathon. She and Fred led a very active life of traveling and hiking around the world, and she loved the outdoors and especially loved summer vacations in Ely and winters in Florida. She was always active as a volunteer and supporter of causes and projects she believed in.

At the tragic loss of Dorothy and Fred's son Scott, they established an endowment fund in his memory at Camp Widjiwagan. The proceeds from the fund have provided financial assistance for underserved campers and perpetuated Scott's legacy for many decades.



Allen "Al" Kent Johnson

Age 76; **Al Johnson** passed away peacefully on July 8 at home surrounded by family after living with dementia for several years. He is survived by wife Jan, daughter Alissa, sister Judy and brother Ted.

From a young age, Al developed a lifelong passion for wilderness canoe trips through YMCA Camp Widjiwagan, where he was a camper and counselor, and paddled to both Hudson Bay and the Arctic Ocean. He was a Voyageur camper in 1960, and led a Voyageur trip in 1965. Al remained a loyal Widjiwagan volunteer throughout his lifetime and supported the annual fund for decades.

Al dedicated his career to the automotive industry, working mostly with Saab and Subaru. He was called "the car whisper." He dedicated his later years to caring for his rescue dogs, bicycling and volunteering for local and national political campaigns. Memorials were directed to the Widjiwagan Herbert O. Johnson Family Endowment in Al's memory. His legacy will live on providing financial assistance to campers and will serve as a living memory for Al and his family.

Age 88; **Martin Kellogg** passed away peacefully Thursday, March 21, 2019. He is survived by wife Esther; children Joe (Joanne), Doug (Needhi), Bill (Jennifer) and Jeannine; and grandchildren Sarah, Ian, Ben, Erik, Sam, Elias and Kiran.



Martin Kellogg

Martin's lifelong passions spanned family, canoeing, business, conservation, law, politics and community service. He inspired many and by example taught kindness, devotion, generosity, humility, humor, service and love of family.

Martin earned a degree in industrial engineering and business administration, a master's degree in accounting and economics and a law degree. He also served as captain in the Marine Corps. Martin worked in several construction and accounting

firms before becoming vice president and treasurer of Tennant Company. In 1983, he joined UFE Incorporated, an international manufacturer of precision molded plastics, where he eventually became president, CEO and co-owner.

A love of the outdoors motivated Martin to work tirelessly throughout his life to conserve wilderness for future generations. He helped lead the effort to establish Voyageur's National Park, and worked closely with the Minnesota Parks & Trails Council for more than 50 years. He also served on numerous conservation group boards.

Martin's legacy will live on at Camp Widjiwagan through the Kellogg Family Endowment Fund, ensuring wilderness camping is accessible for generations to come.

Age 58; **Steven C. Tyler** passed away on August 20, 2019. He is survived by son, Alex; brother, John (Carol); sister, Julie (Scott) Baumeister; nieces, Brianna and Brooke. Memorials in Steve's honor were directed to the Camp Widjiwagan General Endowment, enabling campers to create life-lasting experiences like he had so many years ago.

Steven was a Widjiwagan Camper in the mid to late '70s. His counselor Bruce Casselton remembers Steven as a very pleasant young man with a quick sense of humor. He made the group laugh a lot all through their Explore Canoe trip. Widjiwagan had made a big impact on him, one that followed him through his whole life.

Steve's employer, Advanced Care Inc, said: "You had an outstanding natural ability to care for those in need. Your compassion did not go unnoticed. It extended above and beyond your role, which brought joy and comfort to your clients and allowed them to remain independent in their homes and in the community. You will be missed dearly by everyone who was blessed to have known you."



From the left, Jeff Rick, Steve Tyler, Bruce Casselton, Bill Mohn, Dan Mueller and Scott Bixby.

Every Fund Tells a Story

THE PEOPLE AND STORIES BEHIND WIDJI'S NEWEST ENDOWMENT FUNDS

Widji has a legacy of intergenerational support with each generation supporting the next through the endowment. Each named endowment fund has a story to tell, honoring life-changing Widjiwagan experiences and memorializing friends and loved ones who were an important part of the Widji community.

In 2019, three endowment funds were started or updated.

Lynne Meyer Family Endowment Fund



Lynne Meyer

Over the years, Camp Widjiwagan has been a source of empowerment, strength and joy for **Lynne Meyer** and her family. Now Lynne is passing this legacy to the next generation through the new Lynne Meyer Family Endowment Fund.

Lynne's dad, Walt Meyer, was an active member of the Midway Y, and loved camping and canoeing. A good friend at the Y suggested he send

his daughter to Widji. Lynne's older sister Susan was the first to make the trip to Ely, and Lynne got her chance at age 13, followed by younger sister Carol. As a teen, Lynne couldn't wait to get back to Widji every summer, and in 1967 she became a Voyageur, paddling from Savant Lake to Sioux Lookout.

"In the 1960s there were not a lot of places where women could excel in the same way as men. Widji was a lifeline for me," Lynne said. "My wish with this endowment fund is to create the groundwork today that will make those experiences available to young people for many years into the future. It's a commitment and a gift to future generations."

"My wish with this endowment fund is to create the groundwork today that will make those experiences available to young people for many years into the future. It's a commitment and a gift to future generations." –Lynne Meyer

Western-Leaf Family Endowment Fund



Richard Western

George Leaf never attended Camp Widjiwagan, yet he was a big supporter. George's brother-in-law had been a Widji camper, as had his daughter's husband Richard Western—a Voyageur and staff member—and George could see the impact Widji had on their lives.

John and Sarah Western, Richard and Linda's children, became the third generation in the family to

be connected to Widji. George had the pleasure of sending off his grandchildren on the Widji bus over many summers, as they progressed to become Voyageurs and later trail staff.

Linda and Richard carried on this tradition, sending off their own grandchildren—Lauren, Nicholas, Kiera and Bryn—for Widji adventures.

When Richard passed away on August 16, 2019, the family wanted to remember Richard and honor this multiple-generation Widjiwagan tradition. They renamed and expanded the George Leaf Memorial Endowment Fund to become the "Western-Leaf Family Endowment Fund for YMCA Camp Widjiwagan." From generation to generation, the Western-Leaf family is creating a legacy that will support the Widji mission and programs for many future generations of campers.

Henry Zietlow Endowment Fund



Henry Zietlow

Henry Zietlow (2000–2019) approached life with a sense of joyous ambition. Described as brilliant, engaging, humble and wise beyond his years, he was as comfortable racing a single rowing shell as he was canoeing in the

Ontario wilderness. And he was equally adept at performing Wieniawski's Violin Concerto No. 2 in D minor as he was at presenting research at an international science competition.

Henry spent six summers at Widjiwagan, which included two backpacking trips and four canoe trips, culminating in a 40-day, 600-mile Voyageur trip down the Thelon River in the Northwest Territories and Nunavut. He held a deep and abiding love for the natural world and treasured these trips into the wilderness. His unbreakable spirit continues to lift up those who knew him. Henry was much more than a light. Henry was a lighthouse.

The Henry Zietlow Memorial Endowment Fund will benefit Widjiwagan campers in perpetuity. Supporting Widjiwagan, with a special preference for financial assistance and program subsidies, this fund will bring exceptional camping experiences to youth and teens over the many years ahead. We remember Henry and celebrate his life in this most meaningful way.



Financial Picture 2019

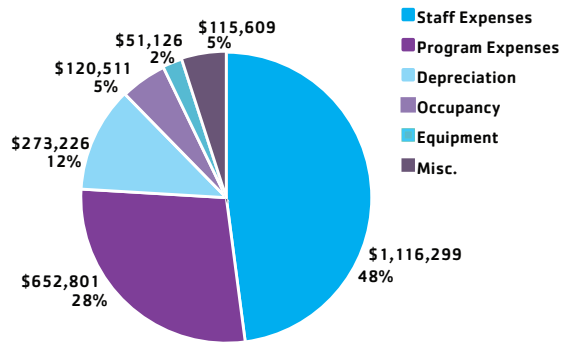
Every year, we review the financial picture for YMCA Camp Widjiwagan; every year, we are humbled by the continued support of our community and the enormous role you play in helping young people to learn and grow from a Widji experience.

The charts below offer a snapshot of the revenues and expenditures that make up Widji's financial base. Your annual contributions and earnings from Widji's endowment made up 24% percent of our revenue in 2019.

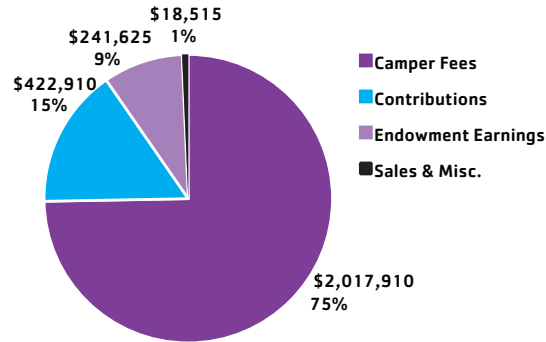
That strong and sustained support helps us advance our mission of developing in young people a respect for self, community and the environment through wilderness adventure and environmental education. We couldn't do it without you.

Thank you.
The Widjiwagan Financial Development Committee

2019 EXPENSES



2019 REVENUES



CONGRATULATIONS TO 2019 YOUTH THRIVE AWARD NOMINEE ANNA GRACE HOTTINGER



The Widjiwagan staff team is excited to congratulate our 2019 Youth Thrive Award Nominee, Anna Grace Hottinger. This annual award is given to one youth member from each Y branch of the YMCA of the Greater Twin Cities, and recognizes outstanding community service by young leaders.

Anna Grace completed her 10th grade year in 2019 at EdVisions Off Campus High School. In addition to her commitment to her academic

success, Anna Grace served as a powerful advocate for addressing climate change and other environmental concerns in Minnesota and nationwide. We delighted in watching Anna Grace encourage lawmakers to pass a Green New Deal for the state of Minnesota during a press conference at the state capitol. Anna Grace and her peers at Minnesota Can't Wait worked to draft this bill and advocated for it.

As a member of the Widji Leaders of the Leaders (LOL) Committee, Anna Grace also encouraged other Widji campers to become involved in community causes through the impressive example she set and by connecting her peers with organizations effecting change. In addition to all of these contributions, Anna Grace served as an emotionally aware leader who consistently worked to include all members of Widji Leaders. She also brought joy to our meetings with her sense of humor and lively spirit. We feel lucky to have young people like Anna Grace in our community, and look forward to watching her continue to make the world better place!

2019 FINANCIAL SCHOLARSHIP RECIPIENTS

	# OF CAMPERS	AMOUNT
Summer Campers:	\$80,624	52 Campers
BOLD & GOLD and Organizational Groups:	\$21,900	25 Campers
Outdoor Learning Program Students:	\$37,224	468 Campers
TOTAL:	\$139,748	545 Campers

2019 Endowment Donors

James Adams Memorial Endowment Fund

Jim & Julia Adams
The Bakker-Arkema Family
US Bancorp Foundation

Allison Anne Anderson Memorial Endowment Fund

Netflix
Jennifer Silver
Ellie Wood

Kevin Burke Memorial Endowment Fund

Northeastern Minnesotans for
Wilderness

Patrick Butler III Memorial Endowment Fund

Patrick & Twiss Butler

Charles and Michael Cheney Memorial Endowment Fund

Arta Cheney

Doug and Kathy Clock Advanced Trip

Kelly Davis Advanced Trip Endowment Fund

in honor of Sally & Tom Patterson
Jane Davis Bennett

David Warner Doerr & Charles Adams Doerr Memorial Endowment Fund

Kathie Doerr

Scott Bradford Forro Memorial Endowment Fund

Dorothy Forro

Gardner Family Endowment Fund

Jim & Joan Gardner

Gilje Clements Family Endowment Fund

Kathryn Gilje & Trish Chapman

Otis H. Godfrey Jr. Endowment Fund

Paul & Mary Sue Godfrey

Greenberg Family Endowment Fund

Sue & Bob Greenberg
The 614 Company

Ju-Ka-Lin Gustafson Endowment Fund

Linda Gustafson & Roxy Port

Hirt Family Endowment Fund for Advanced Trip Program

Geoffrey & Linda Hirt

David E. & Judy Jerde Endowment Fund

Erik & Elizabeth Jerde

Herbert O. Johnson Family Endowment Fund

in memory of Allen K. Johnson
Erma Comstock
Penelope Ellsworth
Frances Homans & Allan Torstenson
Karen & Robert Hoyle
Alicia Johnson
Dennis & Alice Johnson
Robert & Susan Mantell
Judith Miller
Laura & Scott Miller
Donna Nelson & William Allen
Jan Nicodemus
Mary Louise Nicodemus
Janice & Mike Weum
Carol Wolff & Jeffrey Isaacson
Sally & Berhane Worku
Ann J. Wynia
Amy Yunis

in honor of Alissa Johnson
Judith Miller

in honor of Jan Nicodemus
Judith Miller

Kim Koch Memorial Endowment Fund

in memory of Kathy Ball
Elizabeth Furman
Lynne Meyer & Mary Walser

Bruce Koci Memorial Wood Canvas Canoe Endowment Fund

Robert & Ruth Baker
Ann I. Guhman

Rodger & Katherine Lundberg Endowment Fund, which benefits YMCA Camps du Nord & Widjiwagan

Susan Lundberg Johnson &
Michael Johnson

Armin & Virginia Luehrs Campership Endowment

Armand & Beverly Ball
Windy & Marie Linder

Christopher T. Lyford Memorial Endowment Fund

Kathryn Lyford

William & Katherine Mackenzie Endowment Fund In Honor of their Grandchildren

Thomas & Judith Mackenzie

Dave & Sherla Mayer Family Endowment Fund

Dave & Sherla Mayer

McNeely Endowment Fund

Greg McNeely

Lynne Meyer Family Endowment Fund

Walser Family Foundation of the
Saint Paul Foundation
in memory of Marjory Meyer
Nancy & Richard Dana
Tom Hiendlmayr & Jan Ormasa
Lynne Meyer & Mary Walser

Harry & Shirley Nye Endowment Fund

Penny Maines & Knute Johnson

Robert Olander Ecology Endowment Fund

Olander Family Fund of the Orange
County Community Foundation

Ormasa-Hiendlmayr Endowment Fund for Advanced Trips

Jan Ormasa & Tom Hiendlmayr

KC Racciatti Family Endowment Fund

in honor of Tom Racciatti
Bank of America Charitable Foundation
Sara & Kris Johnson
Mark & Alecia Stenseth

Linda & Dominic Ramacier Endowment Fund

Linda & Dominic Ramacier
in memory of
Kathryn L. Ball
Nicholas A. Blee
Donna R. Galles
William P. Cunningham
Alyssa E. Jaehne
Martin N. Kellogg
Armin F. Luehrs
Marjory Meyer

William B. Randall Endowment Fund for Environmental Education Programs

in memory of Victoria B. Cross
Barbara & Joe Halligan

John Rarig Boulware Memorial Endowment Fund

Margaret A. Rarig



Rick Family Endowment Fund

in memory of Robert A. Rick
Joanne Oyen
in memory of Armin Luehrs
Jeff & Rocky Rick
in memory of Steven C. Tyler
Jeff & Rocky Rick

Jay F. Rochlin Memorial Endowment Fund

Bethanne Kronick
Gwyneth Rochlin

Rob Runyon Endowment Fund

Sharon & Donald Fleming
Donna Runyon
Lois Runyon Kadlec

Nora & Joe Seliga Wood Canoe Endowment Fund

The Bell Bern Family
Deborah Johnson

Geoff O. Seltzer Memorial Endowment Fund

Matthew Seltzer & Caroline Schultz

Jim & Marianne Ude for Advanced Trip Endowment Fund

in memory of Kathryn L. Ball
in memory of Robin A. Ball
Jim & Marianne Ude
in honor of Jim Ude
David I. Wright &
Deborah L. Smith-Wright

Western-Leaf Family Endowment Fund

in memory of Richard Western
Edward & Kathryn Ambrozich
Gary & Kelli Ashe
Dolores & Gary Benjamin
Carolyn & Thomas Davies

Bonita B. Davis
James Davis & Vanessa Tanaka
Friends of Richard Western
Lorna & Bruce Gustafson
Paul & Merdys Ingvoldstad
Linda Lammers
Mary K. Lammers
Paul Carroll & Melanie Leite-Carroll
Carrie & Joseph Meeuwesen
National Fluid Power Association
Bette Peltola
Jo & Mark Schug
Ruthana Stock
The Book Club
Robert Townsend
Jean & W.M. Volna
Wanda & Donald Wentworth
Linda Western
Sarah Western & Henry Sullivan
Ellen & Thomas Wilmeth
Nancy Wilson

Henry Zietlow Memorial Endowment Fund

in memory of Henry Zietlow
Mark Absey
Ann Anaya
Marilee & David Anderson
Tracy Arnold
Glenn Baron
Mark Bartlett & Ann Palmer Bartlett
William Bluhm
Renee Champion & David Walsh
Chris & Quinn Cheney
Lynn Christensen Randazzo
Paul & Susan Clabo
Sue & Steve Clewis
Tim & Kelli Commers
Martha & Richard Corfman
Jeffrey & Melinda Cotton
Brian Covell

2019 Endowment Donors, continued

Daniel Covell
Leah Dale & Josh Peterson
Susan Helms Daley
Bonnie & Jim D'Aquila
EDP Foundation
Clarence & Molly Falk
Janey & Dan Farber
Marilyn & Greg Franzen
Angie & Russell Freeman
Rosemary & Art Froehle
Katie & Mark Frohardt
James & Cindy Gardner
Gerald & Patrice Halbach
Susanna & Michael Gibbons
Henry & Charlotte Gjersdal
Susie & Hal Goldstein

Molly Goodyear
Anise Grajeda
Stephen Harrington
Daniel Hedlund & Robin Hedlund
Meike & Robert Hengelfelt
Christine & Randy Hills
Eileen Hunter
Mary E.S. Indritz
Sarah Johnson
Jonathan M. & Margaret C.H. Kelly
Cynthia & Thomas Klecatsky
Julie Kunkel & Thomas Hall
Laura & Tony LaCroix-Dalluhn
Cheryl & John Lalonde
Chris Landgrebe
Anne Larsen Hooley & Mark Hooley

Marit Larson & Adam Sobel
Elyse & Ron Levine Less
Sally Loomis
Jo Lucas
Macalester Master Swimmers
Toby McAdams & Wendy Crowell
Andrew Mellin Family
Joy E. Miller
Minneapolis Rowing Club
Lois Morrison
Bill Mott
Susan Munson-Regala
Mason C. & Gwen S. Myers
Wendy & Daniel Nathan
Erika & Tim Nelson
North Star Chapter of the Sierra Club
Kristi Okane
Katherine & Michael Ostrem
John Patterson & Julie Sonier
Tom & Sally Patterson
Tom Patterson
Jennifer Pitt
Matt & Kristen Poppleton
Bart Richardson
Larry & Edis Risser
Daniel Simkowitz & Mari Nakachi
Beth & Ken Snyder
Christina & Rob Spence
Sara St. Antoine
Peg Stice
Bob Striker
Sylvia Strobel
Gary Tabor
Nancy & Tony Tauber

Jim & June Vanvalkenburg
Theresa & Stan Walker
Doug Welch
Tim Welsh
Jennifer & Jerry Will
Charlotte Zietlow
Nathan Zietlow & Sarah Risser

**YMCA Camps Widjiwagan & du Nord
Garage Sale Endowment Fund**
2019 Garage Sale Proceeds

**YMCA Camp Widjiwagan General
Endowment Fund**

in memory of Kathy Ball
Gloria & Ronald Busch
Blake & Sandy Davis
Doug & Keitha Herron
Karen Maloney
Barbara Wenschlag
Mary Williams
Geoffrey Brewster
in memory of Gregory Bruns
Jonathan Bruns
in memory of Martin N. Kellogg
Tim & Kelli Commers
Deanna Sande
in memory of Mick Lundy
Larry Lundy
in memory of Stella E. Strathy
Charlotte Carlsen
in memory of Homer B. Thomas
Steven M. Thomas

GIFTS IN KIND

Tom Burket – Donation of time and expertise as “project manager” for Year In Review

Cindy and Jamie Gardner – Support of major upgrade of maps on the Widjiwagan Map Board, new furniture for the Staff Lounge and cabins and improvements to the aesthetics of Trail Building.

Michael Gibson and family – Donation of two Polaris snowmobiles

Joey Hann – Donation of PakBoat

Arlene West – Donation of time and expertise with Year In Review design

STAFF TRAINING VOLUNTEERS

Mark Bixby, Kris Henker, Monk Kareken, Amery Robinson, Shor Salkas, Kurt Simer

GARAGE SALE VOLUNTEERS

Numerous and dedicated volunteers drove the garage sale to success once again last year. Sale proceeds benefit Camps Widjiwagan and du Nord Garage Sale Endowment Fund to support scholarships.

NON-BOARD COMMITTEE MEMBERS & VOLUNTEERS

Bruce Casselton, Nora Donnelly, Megan Glavin, Anna Grace Hottinger, Lynne Meyer, Dave Mink, Kim Otte, Linda Ramacier, Erin Walsh, Laura Wellington, Noa Winikoff

2019 HEALTH PROFESSIONALS

Gail Hansen
Martha Hickner
Karen Loewenson
Erin Omann
Jeff Peters

Susan Schloff
Julie Schultz
Sandy and Bruce Scott
Sharon Sivertsen-Modrijan
Tom Stoa



2019 Mountaineer & Voyageur Trips:

**Boys Mountaineer —
Gates of the Arctic, led by
Nick Gardner**

**Girls Mountaineer —
Gates of the Arctic, led by
Allie Horick**

**Boys Voyageur —
Coppermine River, led by
Brent Saxton**

**Boys Voyageur —
Kazan River, led by
Shawn Cope**

**Girls Voyageur —
Elk and Thelon Rivers, led
by Margaret Cahill**

**Girls Voyageur —
Kazan River, led by
Caroline Herman**

**Girls Voyageur —
Coppermine River, led by
Claire O'Brien**

**Girls Voyageur —
Elk and Thelon Rivers, led
by Sela Patterson**

2019 Annual Fund Donors

2019 Explorer Leaders

Diana & Mark Abbott
 Grant Abbott & Elaine Tarone
 Lily Ahrens
 Henry Alexander
 Deborah Allan & Lawrence Wackett
 Andrews Allen III
 Richard Allyn
 Anastasi Jellum, PA
 Elizabeth & Robert Andersen
 Carly Anderson
 David & Virginia Anderson
 Owen Anderson
 Annie's Charitable Fund
 Anonymous (5)
 Sally Anson
 Sally & Peter Anson
 Thomas Arneson
 Paul Aslanian
 Margaret Backstrom
 Pamela & Richard Backstrom
 David & Abbie Bahnemann
 James E. Bailey
 Matthew Bailey & Kristin Gendron
 Walter & Virginia Bailey
 Baker Boy
 Armand & Beverly Ball
 Linnea Barron
 Lauren Barry
 Stephen & Jill Barry
 Rebecca & John Bartlett
 Eric Bendickson & Teresa Mastrangelo
 Olivia K. Benson
 Annelie & Shawn Bergerson
 Sheldon Berkowitz & Carolyn Levy
 Brent Berwin
 Kevin Bevis & Arlene West
 Chris Bewell
 Carrie & Joseph Bird
 Michael Blandford
 Janet Bliss & James Hands
 Nathan Blumenshine
 Thomas & Teresa Boatman
 Deborah Boehm
 Paul H. Boening
 Patrick & Colleen Bollom
 David Booth & Ann Tobin
 Jay Boren

Laurel Bradley
 Gerald & Karen Bren
 Geoffrey Brewster
 Kathleen Briguet
 Nancy Brittain
 Thomas & Victoria Broadie
 William & Julie Brown
 Donald L. Brustle
 David & Lisa Bruns
 Emily Buckner
 Christine G. Buetow
 Jennifer Bunce
 Allison Burke
 Thomas Burket & Kimberly Otte
 The Mans Burnett Family
 Benjamin Bursell
 Susan & Craig Bursell
 Kay & Nicholas Cahill
 Mary & Mark Cahill
 Howard & Christine Cammack
 Bonnie Carlson-Green & Martin Green
 Bruce Casselton & Linda Wainio
 Roger A. Cedarblade
 Donald & Anjali Chen
 Katherine Chinn
 Larry & Pat Clemens
 Gregory & Pam Clements
 Douglas & Kathleen Clock
 Chris Cochran
 The Wallace/Cochran Family
 James Collinge
 Megan Collins
 Hilarie & Caitlin Conboy
 Philip Connor & Mary Jo Erickson-Connor
 Alexander Cook
 Lucy Cosgrove & Joseph Larsen
 Paul & Rachel Craighead
 Michael & Pamela Crane
 Dana K. Crawford
 Karen & Alan Crossley
 Samuel Crossley
 Mary Cunningham
 Andrew Currie
 Leigh & Peter Currie
 Grace Ann & John Curry
 Marilynn Curtis
 Conor F. Cusack
 Ella Daniels

Jane Davis Bennett
 Blake & Toni Davis
 James Davnie & Cara Letofsky
 Judith & Bruce Derauf
 Steven Diede & Anne Zerby
 Andrea Diehl
 Daniel Dobler & Julie Brown Dobler
 Brooks Donald & Karen Mackenzie
 Kris Donnelly
 Dave & Pat Drew
 Charles Driscoll
 Melissa Driscoll & Jay Hambidge
 John & Jodie Duntley
 Sally Durgerian & Allan Schwabacher
 Beth Rice Dutcher & Dave Dutcher
 Brian Edstrom
 Barbara & Thomas Elliott
 Carolyn & Sara Ellstra
 Nancy & Rolf Engh
 Steve Euler & Nancy Roehr
 Sarah Evert & Gary Baker
 Kristi Fackel & Thomas Halverson
 Virginia & Jim Fajt
 John & Linda Farwell
 Marjorie Fedyszyn & John Rock
 Libby & Andy & Andrew Fena
 Nancy Fesler
 Meghan & Matthew Fiala
 Louis Fink & Pamela Grich
 John & Betsy Flaten
 Earl & Constance Fleck
 Elizabeth Flinn
 Kathleen Floberg
 Patricia Fontaine
 Jacqueline Forbes
 Jean Fox
 Thomas M. France
 Marilyn & Gregory Franzen
 James & Carol Fruehling
 Deborah Fulton
 David & Leslie Gardner
 James & Joan Gardner
 Jamie & Cindy Gardner
 Molly Gardner
 Paula & Stace Garrett
 Mark & Norah Garrison
 Judith Gavin
 Robert & Sue Gehrz



Thomas & Judith Gehrz
 Cathy Geist
 GEN Financial Management, Inc.
 Jean Gendron
 Patrick & Martha Gerkey
 Barbara Gipple
 Sam Glenn
 Timothy & Julie Godfrey
 David Goldes & Sheryl Mousley
 Katherine G. Goodrich
 Kate Greenberg
 Timothy Griswold
 Leah Gruhn & Jere' Mohr
 George Guthrie & Suzanne Stamatov
 Helen Haddad
 Katherine Hale
 Jay Hambidge & Melissa Driscoll
 Ora Hammel
 Elizabeth Hand
 Haney/Moore Family
 Jacob & Mary Pat Hansen
 Richard Hansen
 Jane & Norm Hanson
 Jen Hanson
 Anne & James Hartnett
 Patricia Hauser
 Mark Hawkinson & Carol Anderson
 Geoffrey & Shawn Haynes
 Colleen Healy
 Jerome & Joan Helfand
 Meike & Robert Hengelfelt
 Richard & Trudy Henke
 Lisa Henner
 Reuben F. Henriques

Nils Heymann
 Martha Hickner & John Floberg
 Leah Hiendlmayr
 Elizabeth & Steven Hill
 Ann Hobbie & Jeff Benjamin
 Russell & Cynthia Hobbie
 Sarah Hobbie & Jacques Finlay
 Philip Holleran
 William & Mary Hollinshead
 Mark Holloway & Briley Brown Holloway
 Jan & Katherine Horak
 Allison Horick
 James & Nancy Horn
 Gladys L. Howell
 Sandra & Steven Hunt
 John & Ruth Huss
 James & Deborah Ingebretsen
 Sarah Jackson
 Francis & Sally Jo Jefferson
 David & Judy Jerde
 Mark & Sarah Jerde
 Dwight & Patrice Jewson
 Charlotte & Ward Johnson
 Eric Johnson
 Gary Johnson
 Nancy Johnson
 Sara & Kris Johnson
 Lawrence & Carol Jones
 Louise & Richard Jones
 David & Joy Kareken
 Esther Kellogg
 Joseph & Joanne Kellogg
 Kathrine Kelsey
 Dawn & Jim Kerwin

2019 Annual Fund Donors, continued

Patrick Kerwin
Stephen & Jane Kilgriff
Bruce Killips
David Kilpatrick & Julie Schultz
Philip & Ginna Kilpatrick
John Kimberly
Stephanie & Scott King
Eleanor Kinkead & Marty Babcock
Doug Kleemeier
Les & Janice Klos
Knox Foundation
Theodora J. Koeppen
Timothy Kohls
Marian E. Kramer
Barclay Kruse
Jan & Robb Lageson
Jeffrey & Gretchen Lang
Mary & Steven Langlie
Caroline Lauth
Katherine I. Lauth
James Lee & Jean Miller
Ernest & Sarah Lehmann
Joy & Robert Leibman
Eric & Laurel Lein
Daniel Liljedahl
LaVonne & James Liljedahl
Karen Lindig & Gary Bond
Margaret Little
Alice Loewenson
Peter & Karen Loewenson
Gary Lowenberg
Jo Lum
Lawrence Lundy
Jean MacConnachie & John Kearns
Bruce Mackay
Hilary & Fritz Magnuson
Stephen & Katherine Mahle
Thomas & Katie Mahlum
Sara Mairs & Daniel Steinhacker
Richard Malecek
Daniel Mammel
Mark & Nancy Mammel
Adam Mans & Elizabeth Burnett
Krista & Jeff Margolis
Sherla & David Mayer
Sean McCauley & Joselyn Raymundo
Elspeth & F. William McClelland
Daniel McConville

Nicole & Michael McCullough
Melanie McCully
Kate & Jordan McGowan
Charlotte McKlveen
Margot McKlveen
Robert McKlveen & Ellen Jones
Ted McKlveen
Kevin P. McNellis
Mary S. McNellis
Hilary Mead
Hugh & Mary Meier
Miller Family
Elizabeth & John Miller
Judith Miller
George & Rita Mills
John & Judy Miner
Ranlet & Beth Miner
Bjorn & Margot Monson
Betsy & Jim Moore
Jonathan & Martha Morgan
James & Nancy Mulvey
Chris & Shannon Murray
Lynda & Phil Murray
Peter A. Murray
Emily Myhre
Barb & Steve Naramore
Kathryn & Joseph Nasvik
Sallie Neall
C. Roger & LaVonne Nelson
Thomas Neufeld & Suzanne Permeth
Nicholson Family
Mark & Janell Niemann-Ross
Claire O'Brien
Francine & Timothy O'Brien
Catherine O'Dell
Gary & Lynn Olson
Leigh Onkka
Original Bug Shirt Company
Jan Ormasa & Tom Hiendlmayr
Douglas & Phyllis Ostergren
Arthur Page & Anne Bergman
Thomas Paper & Eleanor Bigelow
John Patterson & Julie Sonier
Ned Patterson & Susan Schloff
Sela E. Patterson
Thomas & Sally Patterson
Bryan & Elizabeth Pershing
Karl Peters

Carolyn & Rolf Peterson
Patricia Peterson
Stuart & Corrine Peterson
Jay Pfaender
Philip & Katherine Nason Fund of the
Saint Paul Foundation, directed by
Polly & Robert McCrea
Anne Pick
Karen Pick & John Pierce
Carolyn & Peter Pierce
Katherine L. Pierce
Katherine & Todd Piltingsrud
Roberta Pisa
Susan Pollock & Carla Bates
Alexandra Pope
Matthew & Kristen Poppleton
Sharon & Terry Poppleton
Robert & Karen Porter
Billie Pritzker
Samuel Pritzker
Laura Puckett
Mary Jo K. Quehl
R.C. Lilly Foundation
Nancy & Roger Ralston
Linda & Dominic Ramacier
David & Carol Rankin
Emily Ranta & Zachary Via
Melissa Raphan & Tom Rock
Alexander & Cynthia Read
Catherine Reeves & Steven Utne
Peggy Reichert & Carl Ohrn
Jane & John Reusch
Stephen & Marietta Rice
Jeff & Roxanne Rick
Jessica Rick & Jesse Alston
John & Arlis Riedel
Gale & Derek Robb
Sandra Roe
Susan Roe
Donna J. Roost
Charles G. Rossmann
Ramsey G. Rossmann
Katherine & Chuck Rothstein
Scott & Teresa Roussin
Virginia Ruddy
Ronald & Carolyn Rude
Paul Rusterholz &
Barbara Lomas Rusterholz
Steve Ruther
Jennifer Sahlin

Shor Salkas
Martha Sample
Richard Samuelson
John Saxhaug & Lynn Rabinovitch
Teresa & Stephen Saxton
Hugh K. Schilling Sr.
Jeffrey Schmidt
Eliza Scholl
John Schomaker
Cedric & Janet Schrankler
Mark & Lisa Schroeder
Maureen & John Schulz
Penelope Scialla
Richard & Sandra Scott
John & Sheilah Seaberg
Gordon & Jeanne Shepard of the
Saint Paul Foundation
Lansing Shepard
Bill Scherado
Cynthia & Peter Simer
Kurt & Fay Simer
Sharon Sivertsen-Modrijan &
John Modrijan
Margaret & Lee Skold
Peter Skold & Anna Racer
Slaggie Family
Katherine Slattery
Anne S. Slaughter Perrote
Henry & Donna Slawson
Thomas & Susan Smegal
Helene Smith
Robert & Kimberly Smith
Sarah & Ryan Solberg
St. Paul Y's Service Club
Jessica Standefer & Michael Casello
Alexander Starns
Byron & Connie Starns
Kathryn Starns
Leo & Christine Stern
Mary & Mark Stoick
Joyce Stoker-Hadow
Benjamin Storey
Courtney Storey & Pamela Neary
Robert & Lynn Storey
Robert Stubenvoll
Cynthia Sutton
Tom & Laura Swain
Slater & Cynthia Tai
Christine & Annap Tantisunthorn

Erin & Steven Tarnowski
Team FootWorks
Ten Eyck Family
Lindsey Thomas & David Lauth
Steven M. Thomas
Brian & Danita Thyr
Laura Tiffany & Edward Foster
Grace Tillotson
John & Amy Tillotson
Kirsten Tinglum-Friedman &
Richard Friedman
Brian Kroeger & Dutch Toenjes & Family
Andrew & Julie Turnbull
Katherine Turnbull
Joseph & Lisa Van Clock
Joy R. Van
Peter Vantine
Gary & Judy Vars
Peter Vaughan & Cathy Anson
Joyce & Anthony Vavoulis
Janny Walker & Paul Sharp
Katherine Wallace
Anne & Daniel Walsh
David Walsh & Renee Champion
Carol & Tom Warren
Marcus R Waterbury
Julienne Weighter & John Goggin
Jason & Jennifer Weinzirl
William & Barbara Welke
Stephen & Katherine Wellington
Carla West
Mary & Mark Westra
Janice & Michael Weum
Rick Weyerhaeuser & Annie Brewster
Chuck Handlon & Nancy Wheeler Handlon
Jim & Ann Wheeler
Thomas Wheeler
Amy White & Nick Johnson
David & Suzanne White
Philip & Christy White
John & Janice Wilke
Barbara J. Williams
John Carl & Sarah Williams
Cara Willis
Daniel & Ruth Willius
Peter Wilson
Women's Foundation of Minnesota
Barbara Young
Keely Young-Dixon & Zachary Trotter



YMCA Camp Widjiwagan Administrative Office ▼ The Douglas Dayton YMCA at Gaviidae • 651 Nicollet Mall, Suite 500 • Minneapolis, MN 55402
Camp Address ▼ 3788 North Arm Road ▼ Ely, Minnesota 55731
widji.org ▼ phone 651.645.6605